

NORTH-WEST
QUARTER

MONTVILLE TP.

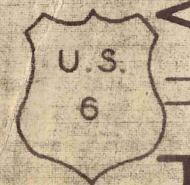
NORTH-WEST
QUARTER

LAKE
CO.

THOMPSON TP.

T
O
W
N
S
H
I
P

H
A
M
B
D
E
N
K
I
L
E



528



SCALE 1 IN. = 10 CH.

JAN. 1, 1955

SEE DETAIL OF
SECTION 13, 10-Q

10 M

SEC. 1

SEC. 2

SEC. 3

SEC. 10

SEC. 9

SEC. 8

SEC. 11

SEC. 12

SEC. 13

195-301 13.55 A. D.E. Finn
 223-603 6.35 A.
 243-367 A. & J. Ash 14.97 A.
 195-302 10 A. E. Bellam
 189-40 10 A.
 20-478 Alton Kautnik 22.22 A.
 188-484 Henry L. Weibel 10.11 A.
 202-525 Martha Ervine
 221-346 J.B. Matik
 8.04 A. C. & Z. Walters
 10.84 A.
 224-276 J.F. Corrigan
 40.87 A.
 212-314 40 Ac. J. Vyse
 220-540 O.H. & N.G. Niehus
 13 Ac.
 220-427 J.S. Magyar
 21 Ac.
 218-353 G.L. & J. Bigelow 11 Ac.
 221-464 20 A.
 245-570 L.B. Schwentner 6 A.
 193-251 Louis Mutter et al 6 A.
 248-26
 A.H. Maxwell 242-175 5 A.
 213-237 11 A.
 188-443 R.C. Scheller et al 5 A.
 L. Rasmussen et al
 213-245 BRYAN DENNY ET AL.
 218-353 M.C. Davis 50 Ac.
 234-300 30 Ac.
 201-718 151-215 J. H. Sidley 61 2/3 Ac.
 212-213 REINHART B. ALTENBURG 50 A.
 247-449 GAR. Pecuzok 10 A.
 233-427 G. Kable 40 Ac.
 232-293 R.R. Dunlap 30 A.
 237-372 A.M. Jackson
 S.S. Mausling LEGGETT 234-504 10 A.
 224-73 W. & E. Mausling 109 Ac.
 240-525 K.A.D. Mausling 47 Ac.
 254-137 M. Srp 74 A.
 217-314 83 Ac. M. Humpal et al
 C. Moeller 50 1/2 Ac.
 233-160 M.S.L. Mausling 1 A. no dimensions
 212-538 G.E. James et al 217-317 66 Ac.
 212-278 Jos. Karalius 102 Ac.
 233-602 R. Hilger et al 50.75 A.
 A. Kairait 33 2/3 Ac.
 255-602 R. Hilger et al 50.75 A.
 33 A. Mary Pethaski
 P. & U. Stanonis 74 1/2 Ac.
 R. Hilger et al 7 A.
 W. & E. Mausling 7 Ac.
 205-493 205-500 M. Deppner 5 Ac.
 E.C. UEGSBY 229-229 10 A.
 162-5 M.W. Pastula 25 2/3 Ac.
 251-115 J. Pluhar 50 Ac.
 265-422 A. & E. ROGERS 75 1/2 Ac.
 128-295 233-314 Lena M. Antisdale 214 2/3 Ac.
 25 1/2 Ac.
 25 1/2 Ac.
 17 2/3 Ac.
 260-469 H. Filippi 100 Ac.
 246-330 F.C. Zizman
 233-384 230-37 L. Rhodes 35.25 A.
 37.75 A.
 195-387 James A. Savage 20 A.
 210-533 A.A. (Approx.)
 Ernest & Ruth Thaler 200-592 16 A.
 195-150 R. & M. Walters 10 A.
 20997A 39,295 A.
 B.E. 226-443 Vosmik 47.50 A.
 243-34 H. & M. Tate 105 2/3 Ac.
 29 4/7 Ac.
 246-316 W.F. Butcher 11 A.
 5 A.
 263-111 A. & E. SCHLEY
 H.W. Bacon 106 Ac.
 260-499 C. & B. MARTIN
 217-344 34 Ac. S.D. Borgeman
 28.07 A.
 218-117 Ed. Hegedus
 47 2/3 Ac.
 16 2/3 Ac.
 237-183 P. & A. Aikens

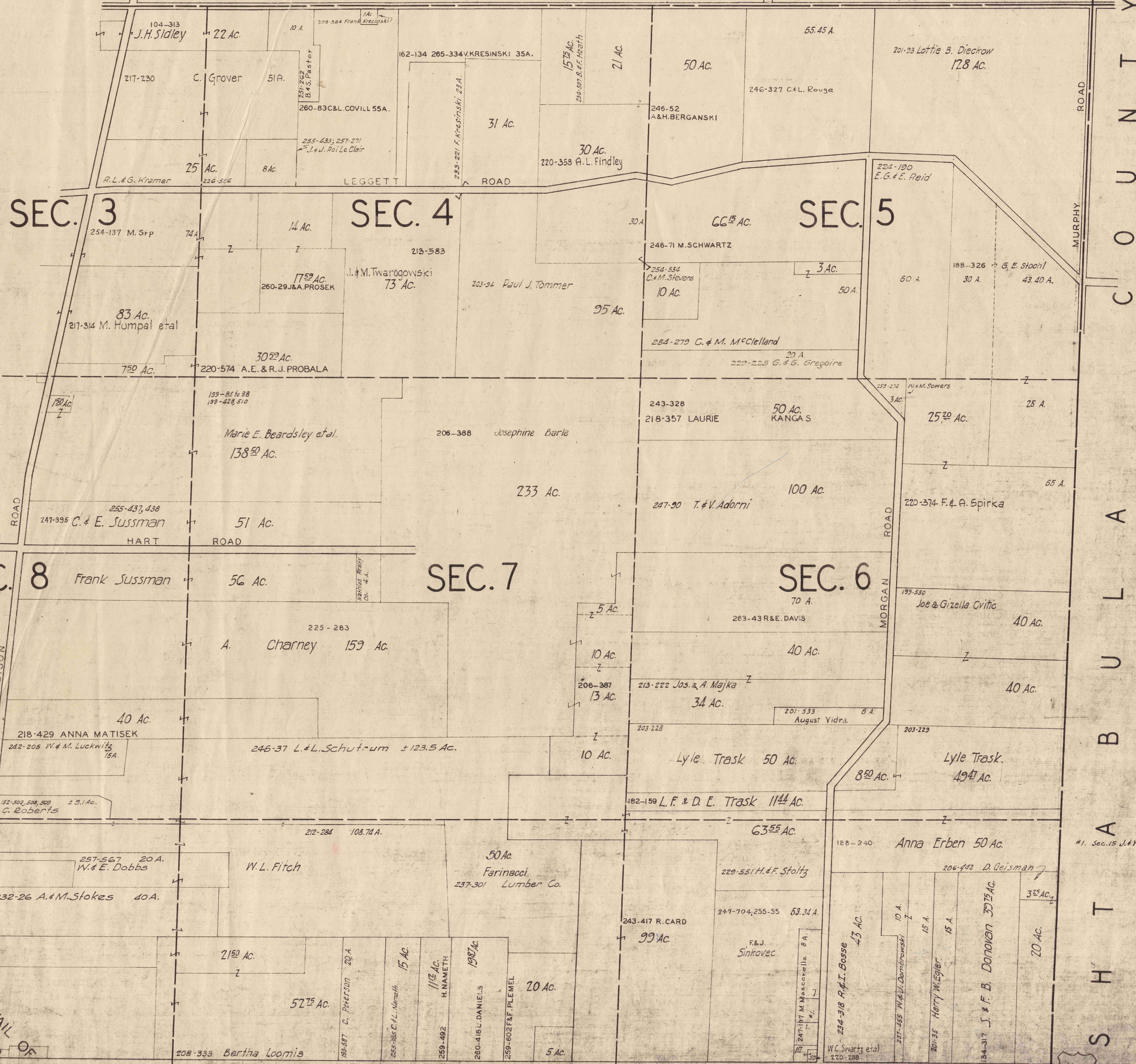
NORTH-EAST
QUARTER

MONTVILLE TP.

NORTH-EAST
QUARTER

THOMPSON BURROWS TP.

528



SEE DETAIL OF SECTION 13 10-Q

U.S. 6

SEC. 13

528

SEC. 14

SEC. 15

U.S. 6

SCALE 1 IN. = 100 FT.

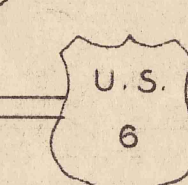
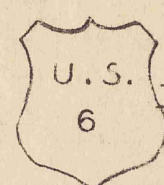
JAN. 1, 1955

10 N.E.

SOUTH-WEST QUARTER

MONTVILLE TP.

SOUTH-WEST QUARTER



SEE DETAIL OF SECTION 13, 10-Q

SCALE 1 in. = 10 ch.

JAN 1, 1955

HAMB DEN TP.

CLARIDON TP.

HUNTSBURG

TOWNSHIP

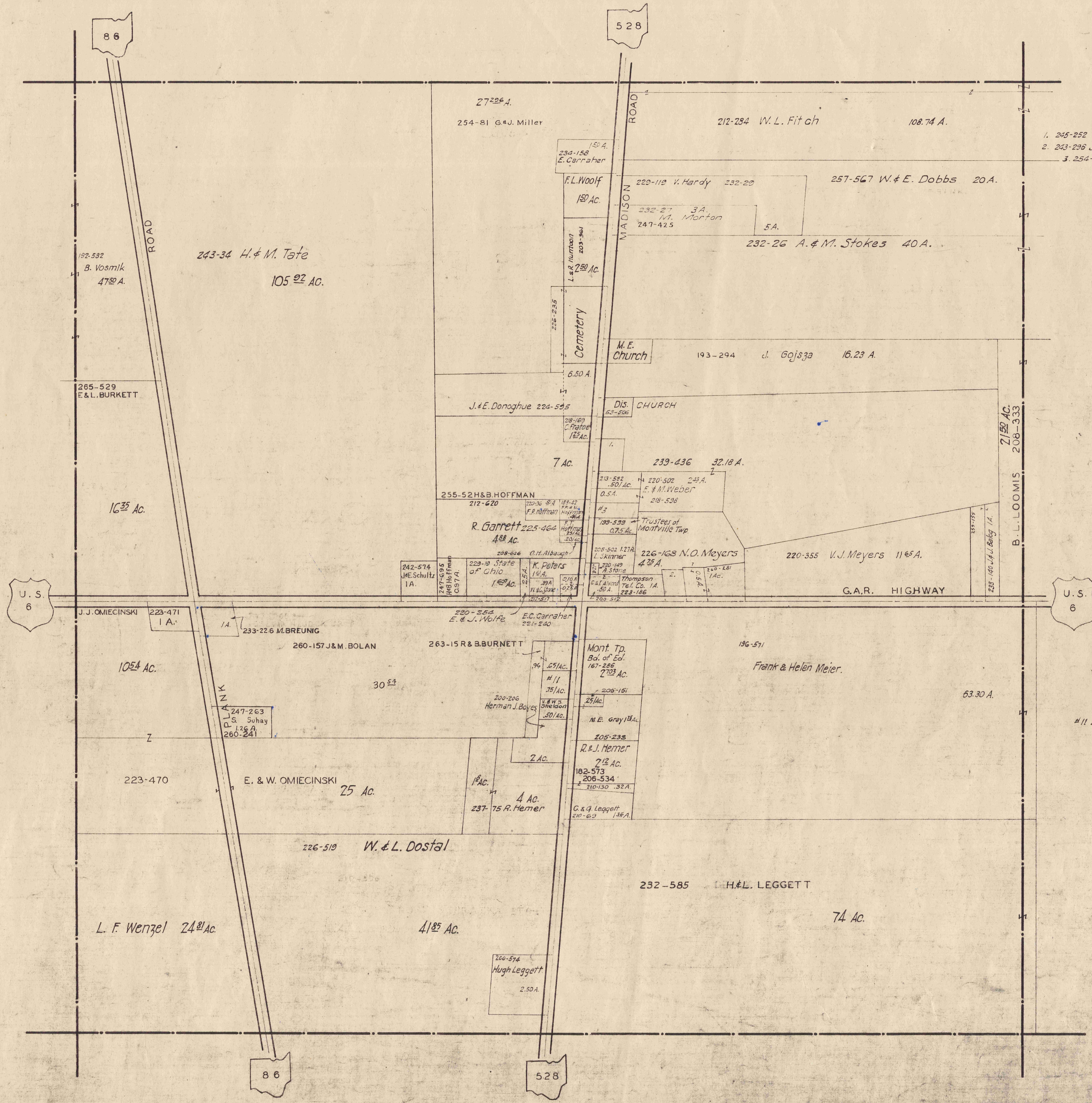
10 S.W.

- #1. 254-500 F. & G. Hillard Sec. 12
- #2. 254-401 S. J. Groghan " 22
- #3. 257-435 V. Road et al " 22
- #4. 254-490 G. & M. Oakford " 22
- #5. 254-556 J. J. Small " 22
- #6. 263-253 S. A. Kondrewych " 22
- #7. 259-271 H. Adams et al " 22

SECTION
13

MONTVILLE TP.

SECTION
13



- 1. 245-252 R. & D. Geisman 0.68 A.
- 2. 243-296 J. Donohue 0.54
- 3. 254-550 E. & E. Weber 0.5 A.



SCALE 1 in. = 5 ch.

JAN. 1, 1955